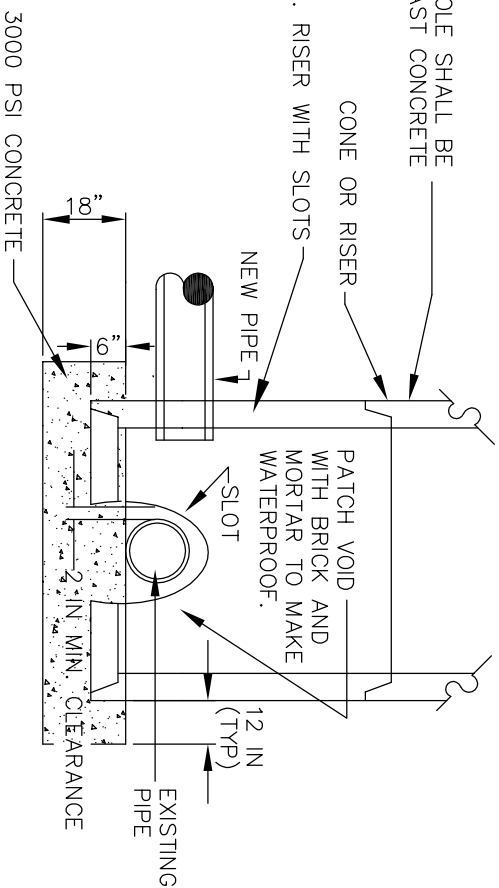


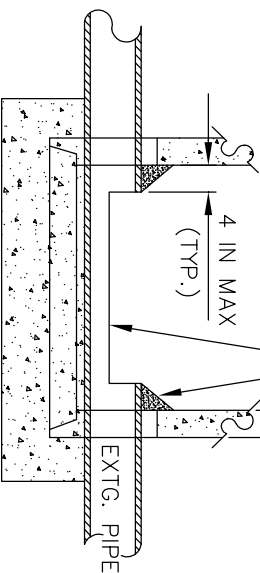
ELEVATION ALONG PIPE



ELEVATION THRU PIPE

EXCESS OF 45° TO COVER SLOTS. (TYP.)

SAW CUT THE EXTG. PIPE (1/2 DIA.) MORTAR SLOPE IN

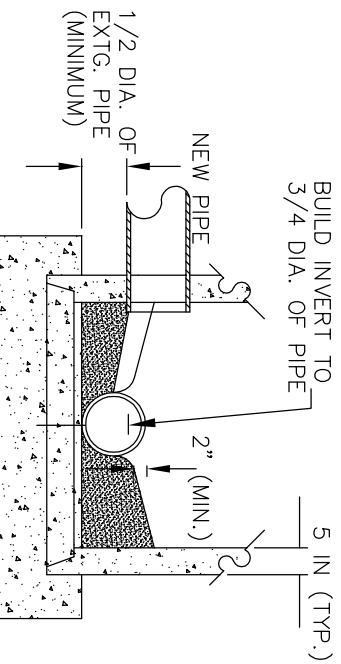


SECTION ALONG PIPE

NOTE:  
ALL OTHER REQUIREMENTS OF N.C.S.D. STANDARD PRECAST MANHOLES APPLY.

ALTERNATIVE METHOD:

REMOVE 10 FT (MIN) SECTION OF EXISTING MAIN AND INSTALL STANDARD MANHOLE AND LENGTH OF NEW PIPE. AS WITH DOGHOUSE TYPE MANHOLES, THE NEW PIPE WILL HAVE TO BE CUT INSIDE THE MAHOLE TO RECEIVE THE FLOWS FROM THE NEW SYSTEM EXTENSION.



SECTION THRU MANHOLE

# DOGHOUSE MANHOLE

NOT TO SCALE

<b>NORTH CHARLESTON SEWER DISTRICT</b>	
7255 STALL ROAD, NORTH CHARLESTON, SC 29406 PH: (843) 764-3072 FAX: (843) 764-2655	
<b>N.C.S.D. STANDARD DETAILS</b>	
DOGHOUSE MANHOLE	
REV. DATE: 3-2-2011	DWG#: GS-005